

**The Data redirecting plugin  
PRINTED MANUAL**

# Data redirecting plugin

©2006-2024 AGG Software

All rights reserved. No parts of this work may be reproduced in any form or by any means - graphic, electronic, or mechanical, including photocopying, recording, taping, or information storage and retrieval systems - without the written permission of the publisher.

Products that are referred to in this document may be either trademarks and/or registered trademarks of the respective owners. The publisher and the author make no claim to these trademarks.

While every precaution has been taken in the preparation of this document, the publisher and the author assume no responsibility for errors or omissions, or for damages resulting from the use of information contained in this document or from the use of programs and source code that may accompany it. In no event shall the publisher and the author be liable for any loss of profit or any other commercial damage caused or alleged to have been caused directly or indirectly by this document.

Printed: 11/2/2024

## **Publisher**

*AGG Software*

## **Production**

©2006-2024 AGG Software

*<http://www.aggsoft.com>*

---

# Table of Contents

<b>Part 1 Introduction</b>	<b>1</b>
<b>Part 2 System requirements</b>	<b>1</b>
<b>Part 3 Installing Data redirecting</b>	<b>1</b>
<b>Part 4 Glossary</b>	<b>2</b>
<b>Part 5 Configuration</b>	<b>3</b>
<b>Part 6 Troubles?</b>	<b>4</b>
1 Possible problems .....	4

## 1 Introduction

The filter module "Data redirecting" for our data loggers (for example, Advanced Serial Data Logger) is an additional module that allows you redirect a data from one data source (for example, COM1) to another data source (for example, COM2). In this case the program will work as a bridge between two data sources. You may filter or change data with help of other filter modules.

## 2 System requirements

The following requirements must be met for "Data redirecting" to be installed:

**Operating system:** Windows 2000 SP4 and above, including both x86 and x64 workstations and servers. The latest service pack for the corresponding OS is required.

**Free disk space:** Not less than 5 MB of free disk space is recommended.

**Special access requirements:** You should log on as a user with Administrator rights in order to install this module.

The main application (core) must be installed, for example, Advanced Serial Data Logger.

## 3 Installing Data redirecting

1. Close the main application (for example, Advanced Serial Data Logger) if it is running;
2. Copy the program to your hard drive;
3. Run the module installation file with a double click on the file name in Windows Explorer;
4. Follow the instructions of the installation software. Usually, it is enough just to click the "Next" button several times;
5. Start the main application. The name of the module will appear on the "Modules" tab of the "Settings" window if it is successfully installed.

If the module is compatible with the program, its name and version will be displayed in the module list. You can see examples of installed modules on fig.1-2. Some types of modules require additional configuration. To do it, just select a module from the list and click the "Setup" button next to the list. The configuration of the module is described below.

You can see some types of modules on the "Log file" tab. To configure such a module, you should select it from the "File type" list and click the "Advanced" button.

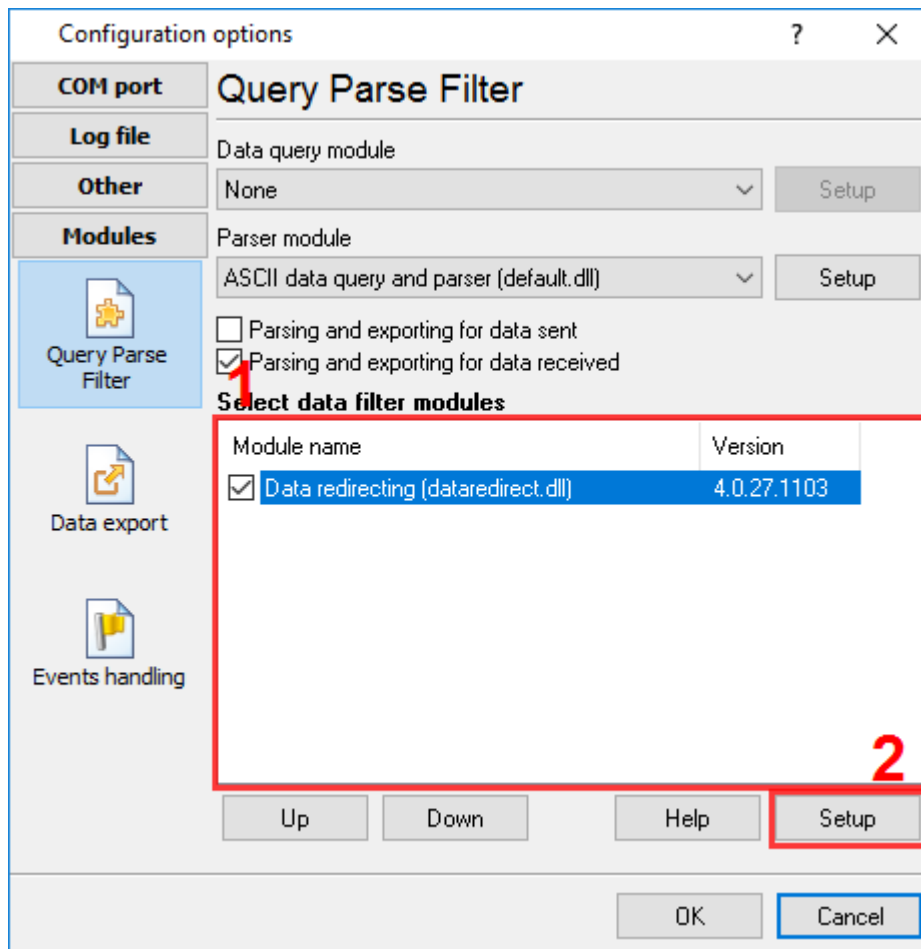


Fig. 1. Example of installed module

## 4 Glossary

**Main program** - it is the main executable of the application, for example, Advanced Serial Data Logger and asdlog.exe. It allows you to create several configurations with different settings and use different plugins.

**Plugin** - it is the additional plugin module for the main program. The plugin module extends the functionality of the main program.

**Parser** - it is the plugin module that processes the data flow, singling out data packets from it, and then variables from data packets. These variables are used in data export modules after that.

**Core** - see "Main program."

## 5 Configuration

The module configuration is very simple (fig.1). You should specify a parser item name from a data parser module. When the "Data redirecting" module will receive this variable from the parser, then the module will send a data from this variable other data source, which name you specified in the "**Target data source**" field. Usually this module is using together with the "ASCII data parser" module and the "**Parser item name**" field contains the "FULL\_DATA\_PACKET" name, which means a full data packet, extracted by the parser using data packet signatures.

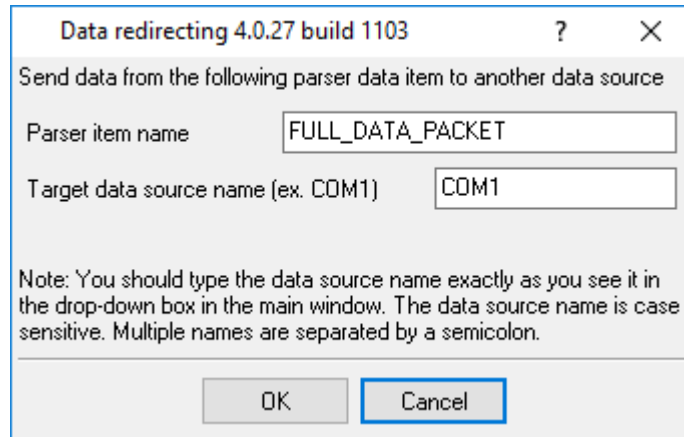


Fig.1. Configuration window

A content of the "Target data source name" field you may get from the drop-down box in the main window.

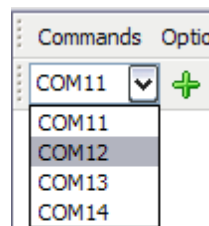


Fig.2. Advanced Serial Data Logger data sources

For the example above you can type COM11, COM12, COM13 or COM14 or their combination.

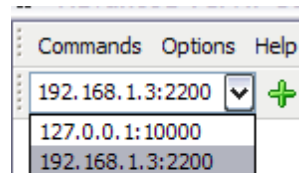


Fig.3. Advanced TCP/IP Data Logger data sources

For the example above you can type 127.0.0.1:10000 or 192.168.1.3:2200 or their combination.

## 6 Troubles?

### 6.1 Possible problems

**No data for publication/exporting** - no data is passed for export. Solution: configure the parser and make sure that one or more variables are defined in the parser.

**Error on binding variable with name %s [%s]** - the error usually occurs if data does not correspond to the specified format. For example, the date and time format does not match source data.

**Unable to disconnect from the database [%s]** and **Unable to connect to a database [%s]** - it is impossible to connect or disconnect from the database. You should check the parameters of the database connection. The analysis of the additional information will help you locate the error.

**Database access error [%s]. Stop operations with the database?** - the message appears if an error occurs during an attempt to execute an SQL query if the second variant of reacting to errors is selected. The message implies the "Yes" or "No" answer. The analysis of the additional information will help you locate the error.

**Unable to verify your SQL script [%s]** - the message appears when an attempt to analyze your SQL query fails. Check if the syntax of your SQL query is correct.

**Tested successfully** - the message appears if your database connection is successfully tested. It requires no additional actions.

**Database isn't used** - the message appears if the module is temporarily disabled (the "Temporarily disabled" check box is selected) or the database name field is empty. Check the connection parameters.

**Database isn't selected** - the message appears if the database type is not selected. Check the connection parameters.

**Database: %s** - %s contains the database name. The message appears if the database connection is successful. Usually, you see it when you call the module for the first time. It requires no additional actions.

**Invalid data block length (columns=%d,length=%d)** - an internal application error. It means that the data sent by the parser is in an invalid format. Perhaps, you are using the module incompatible with the version of the Advanced Serial Data Logger kernel. Update the versions of both the kernel and the module.

**The time of connection is not due yet (%d,%d)** - the message appears during an attempt to connect to the database after the connection to it has been lost and the "Reconnect after" option is enabled. No additional actions are required.

**Invalid procedure call. Bad arguments** - an attempt to call the module using invalid parameters. Perhaps, you are using the module incompatible with the version of the Advanced Serial Data Logger kernel. Update the versions of both the kernel and the module.

**Writing to the database is complete** - the message appears if your queue of SQL queries is successfully executed. It requires no additional actions.

**Writing to the database is complete with errors** - the message appears if the execution of your queue of SQL queries was interrupted by an error. It requires no additional actions.

**Your SQL is empty. Please, specify some SQL text first** - the message appears if you do not enter the text for your SQL query. Check if the options on the "SQL queue" tab are configured correctly.

**Invalid temporary path** - the path to the temporary file specified by you does not exist. Enter a new path in the "Temporary folder" field on the "Errors handling" tab.

%s, %d - will be replaced by additional information.